

UCT Take Up Units



Wide slot, standard duty with set screw lock.

- Cast iron housing
- Wide inner race bearing

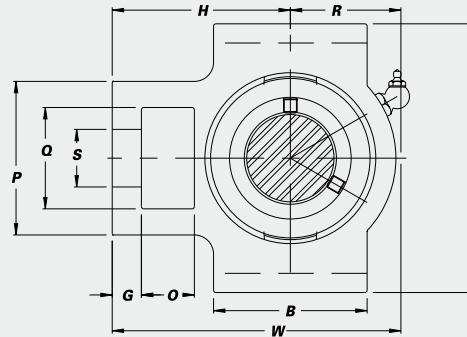
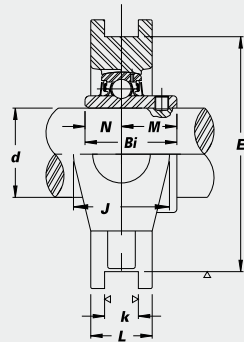
- B-type seals
- L3-type seals available in some sizes



B-type Seal



L3-type Seal



Unit No.	Shaft Dia.		Dimensions (in.) (mm)															Bearing No.	Housing No.	Weight (lbs.)			
	d (in.)	d (mm)	O	G	P	Q	S	B	k	E	A	W	J	L	R	H	Bi				N	M	
UCT 201		12																			UC 201		
201-8	1/2																				201-8		
202		15																			202		
202-10	5/8		5/8	13/32	2	1 1/4	3/4	2	1 7/32	3	3 1/2	3 11/16	1 1/4	1 3/16	1 5/16	2 13/32	1.2205	0.5000	0.7205				
203		17	16	10	51	32	19	51	13.5	76.2	89	94	32	21	33	61	31.0	12.7	18.3		T 204	1.7	
204-12	3/4																				204-12		
204		20																			204		
UCT 205-14	7/8																				UC 205-14		
205-15	1 5/16																				205-15		
205		25	5/8	13/32	2	1 1/4	3/4	2	1 7/32	3	3 1/2	3 13/16	1 1/4	1 5/16	1 3/8	2 1/16	1.3386	0.5630	0.7756				
205-16	1		16	10	51	32	19	51	13.5	76.2	89	97	32	24	35	62	34.0	14.3	19.7		T 205	1.9	
UCT 206-17	1 1/16																				UC 206-17		
206-18	1 1/8																				206-18		
206		30	5/8	13/32	2 7/32	1 15/32	55/64	2 1/4	1 7/32	3 1/2	4 1/32	4 7/16	1 15/32	1 3/32	1 11/16	2 3/4	1.5000	0.6260	0.8740				
206-19	1 3/16		16	10	56	37	22	57	13.5	88.9	102	113	37	28	43	70	38.1	15.9	22.2		T 206	2.9	
206-20	1 1/4 S																				206-20		
UCT 207-20	1 1/4																				UC 207-20		
207-21	1 5/16																				207-21		
207-22	1 3/8		5/8	1/2	2 17/32	1 15/32	55/64	2 17/32	1 7/32	3 1/2	4 1/32	5 3/32	1 15/32	1 3/16	2	3 1/16	1.6890	0.6890	1.0000				
207		35	16	13	64	37	22	64	13.5	88.9	102	129	37	30	51	78	42.9	17.5	25.4		T 207	3.5	
207-23	1 7/16																				207-23		
UCT 208-24	1 1/2																				UC 208-24		
208-25	1 7/16																				208-25		
208		40	3/4	5/8	3 3/32	1 15/16	1 9/64	3 3/32	1 11/16	4	4 1/2	5 23/32	1 15/16	1 5/16	2 7/32	3 15/32	1.9370	0.7480	1.1890				
UCT 209-26	1 5/8																				UC 209-26		
209-27	1 11/16																				209-27		
209-28	1 3/4		3/4	5/8	3 3/32	1 15/16	1 9/64	3 3/32	1 11/16	4	4 19/32	5 23/32	1 15/16	1 3/8	2 1/4	3 7/16	1.9370	0.7480	1.1890				
209		45	19	16	83	49	29	83	17.5	101.6	117	144	49	35	57	87	49.2	19.0	30.2		T 209	5.5	
UCT 210-30	1 7/8																				UC 210-30		
210-31	1 5/16																				210-31		
210		50	3/4	5/8	3 3/32	1 15/16	1 9/64	3 3/8	1 11/16	4	4 19/32	5 7/8	1 15/16	1 15/32	2 5/16	3 17/32	2.0315	0.7480	1.2835				
210-32	2 S		19	16	83	49	29	86	17.5	101.6	117	149	49	37	59	90	51.6	19.0	32.6		T 210	5.7	
UCT 211-32	2																				UC 211-32		
211-34	2 1/8																				211-34		
211		55	1	3/4	4 1/32	2 17/32	1 3/8	3 3/4	1 1/16	5 1/8	5 3/4	6 23/32	2 17/32	1 1/2	2 9/16	4 3/16	2.1890	0.8740	1.3150				
211-35	2 3/16		25	19	102	64	35	95	27	130.2	146	171	64	38	65	106	55.6	22.2	33.4		T 211	8.8	
UCT 212-36	2 1/4																				UC 212-36		
212		60	1 1/4	3/4	4 1/32	2 17/32	1 3/8	4 1/32	1 1/16	5 1/8	5 3/4	7 5/8	2 17/32	1 21/32	2 15/16	4 11/16	2.5630	1.0000	1.5630				
212-38	2 3/8		32	19	102	64	35	102	27	130.2	146	194	64	42	75	119	65.1	25.4	39.7		T 212	10.6	
212-39	2 7/16																				212-39		
UCT 213-40	2 1/2																				UC 213-40		
213		65	1 1/4	13/16	4 3/8	2 3/4	1 39/64	4 3/4	1 1/16	5 15/16	6 9/16	8 13/16	2 3/4	1 23/32	3 7/16	5 13/32	2.5630	1.0000	1.5630				
UCT 215-47	2 15/16																				UC 215-47		
215		75	1 1/4	13/16	4 3/8	2 3/4	1 39/64	4 3/4	1 1/16	5 15/16	6 9/16	9 1/8	2 3/4	1 7/8	3 3/8	5 1/2	3.0630	1.3110	1.7520				
215-48	3		32	21	111	70	41	121	27	150.8	167	232	70	48	92	140	77.8	33.3	44.5		T 215	15.9	

Interchange Page 91