

UCPA Tapped Base Pillow Blocks



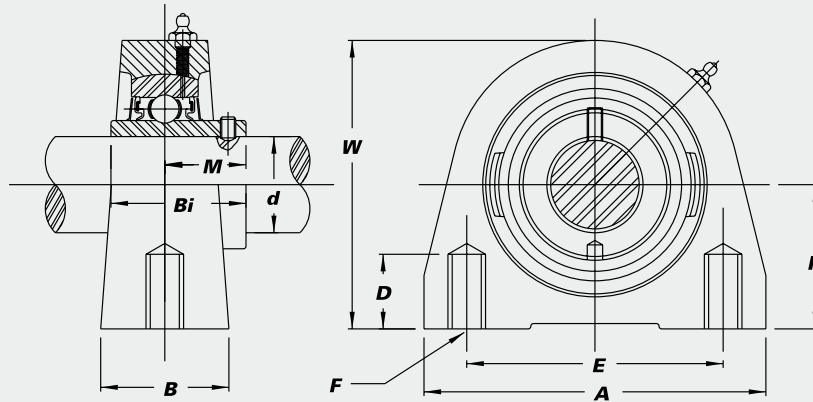
B-type Seal



L3-type Seal

Standard duty with set screw lock.

- Cast iron housing
- Wide inner race bearing
- B-type seals
- L3-type seals available in some sizes



Unit No.	Shaft Dia.		Dimensions (in.) (mm)									Bearing No.	Housing No.	Weight (lbs.)				
	<i>d</i>		<i>H</i>	<i>A</i>	<i>E</i>	<i>B</i>	<i>W</i>	<i>F</i> -Tapped Holes	<i>D</i> -Min. Tap Depth	<i>M</i>	<i>Bi</i>							
UCPA 201-8	1/2																	
202-10	5/8																	
203	17	15/16	27/8	2	1 1/2	2 3/16	3/8"-16	1/2	0.7205	1.2205								
204-12	3/4	33.3	73	50.8	38	65	UNC	13	18.3	31.0								
204	20																	
UCPA 205-14	7/8																	
205-15	1 5/16																	
205	25	1 1/16	3	2	1 1/2	2 13/16	3/8"-16	1/2	0.7756	1.3386								
205-16	1	36.5	76	50.8	38	71	UNC	13	19.7	34.0								
UCPA 206-17	1 1/16																	
206-18	1 1/8																	
206	30	1 11/16	4	3	1 1/2	3 3/8	7/16"-14	5/8	0.8740	1.5000								
206-19	1 3/16	42.9	102	76.2	38	86	UNC	16	22.2	38.1								
206-20	1 1/4 S																	
UCPA 207-20	1 1/4																	
207-21	1 5/16																	
207-22	1 3/8																	
207	35	1 7/8	4 1/4	3 1/4	1 7/8	3 3/4	1/2"-13	3/4	1.0000	1.6890								
207-23	1 7/16	47.6	108	82.6	48	95	UNC	19	25.4	42.9								
UCPA 208-24	1 1/2																	
208-25	1 9/16																	
208	40	1 15/16	4 5/8	3 1/2	1 7/8	3 15/16	1/2"-13	3/4	1.1890	1.9370								
UCPA 209-26	1 5/8																	
209-27	1 11/16																	
209-28	1 3/4																	
209	45	2 1/8	5	3 3/4	2	4 1/4	1/2"-13	3/4	1.1890	1.9370								
UCPA 210-30	1 7/8																	
210-31	1 15/16																	
210	50	2 1/4	5 1/2	4	2	4 5/8	5/8"-11	7/8	1.2835	2.0315								
210-32	2 S	57.2	140	101.6	51	117	UNC	22	32.6	51.6								

Interchange Page 91