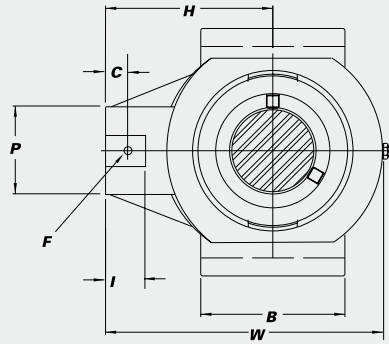
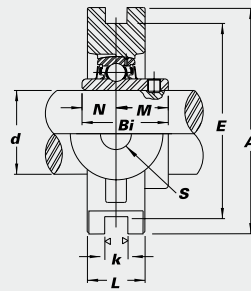


SUCSTRS & SUCST Take Up Units



SUCSTRS • Narrow Slot All Stainless Steel

• B-type seals



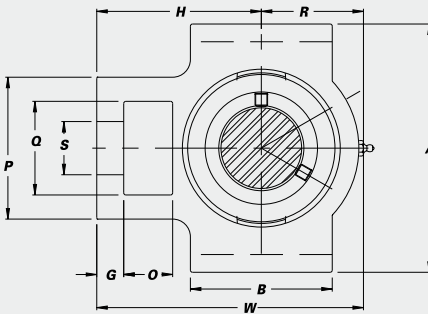
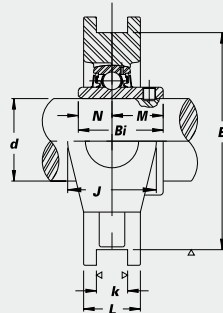
B-type Seal

Bearing No.	Shaft Dia.		Dimensions (in.) (mm)															Bearing No.	Housing No.	Weight (lbs.)
	d		F	C	P	I	S	B	k	E	A	W	L	H	Bi	N	M			
	(in.)	(mm)																		
SUCSTRS 205-14 205 205-16	⁷ / ₈ 1	25	⁵ / ₁₆ 7.9	⁷ / ₁₆ 11.1	¹³ / ₁₆ 35	⁷ / ₈ 22	²⁵ / ₃₂ 20	¹⁷ / ₃₂ 47	¹ / ₄ 6.4	²⁵ / ₁₆ 66.7	³ / ₈ 79	³²⁹ / ₃₂ 99	¹³ / ₃₂ 28	²⁷ / ₃₂ 64	1.3386 34.0	0.5630 14.3	0.7756 19.7	SUC 205-14 205 205-16	STRS 205	2.0
SUCSTRS 206-18 206 206-19 206-20	¹¹ / ₈ ¹³ / ₁₆ ¹³ / ₁₆ ¹ / ₄ S	30	⁵ / ₁₆ 7.9	¹ / ₂ 12.7	¹⁹ / ₁₆ 40	1 25	²⁵ / ₃₂ 20	²¹ / ₂ 64	¹ / ₄ 6.4	³¹ / ₂ 88.9	4 102	⁴¹⁵ / ₁₆ 125	¹³ / ₈ 35	3 76	1.5000 38.1	0.6260 15.9	0.8740 22.2	SUC 206-18 206 206-19 206-20	STRS 206	3.8
SUCSTRS 207-20 207-21 207-22 207 207-23	¹¹ / ₄ ¹⁵ / ₁₆ ¹³ / ₈ ¹³ / ₈ ¹⁷ / ₁₆	35	⁵ / ₁₆ 7.9	¹ / ₂ 12.7	¹⁹ / ₁₆ 40	1 25	²⁵ / ₃₂ 20	²¹ / ₂ 64	¹ / ₄ 6.4	³¹ / ₂ 88.9	4 102	⁴¹⁵ / ₁₆ 125	¹³ / ₈ 35	3 76	1.6890 42.9	0.6890 17.5	1.0000 25.4	SUC 207-20 207-21 207-22 207 207-23	STRS 207	4.0



SUCST • Wide Slot All Stainless Steel

• B-type seals



B-type Seal

Bearing No.	Shaft Dia.		Dimensions (in.) (mm)															Bearing No.	Housing No.	Weight (lbs.)		
	d		O	G	P	Q	S	B	k	E	A	W	J	L	R	H	Bi				N	M
	(in.)	(mm)																				
SUCST 205-14 205 205-16	⁷ / ₈ 1	25	⁵ / ₈ 16	¹³ / ₃₂ 10	2 51	¹¹ / ₄ 32	³ / ₄ 19	2 51	¹⁷ / ₃₂ 13.5	3 76.2	³¹ / ₂ 89	³¹³ / ₁₆ 97	¹¹ / ₄ 32	¹⁵ / ₁₆ 24	¹³ / ₈ 35	²⁷ / ₁₆ 62	1.3386 34.0	0.5630 14.3	0.7756 19.7	SUC 205-14 205 205-16	ST 205	1.9
SUCST 206-18 206 206-19 206-20	¹¹ / ₈ ¹³ / ₁₆ ¹³ / ₁₆ ¹ / ₄ S	30	⁵ / ₈ 16	¹³ / ₃₂ 10	²⁷ / ₃₂ 56	¹¹⁵ / ₃₂ 37	⁵⁵ / ₆₄ 22	²¹ / ₄ 57	¹⁷ / ₃₂ 13.5	³¹ / ₂ 88.9	⁴¹ / ₃₂ 102	⁴⁷ / ₁₆ 113	¹¹⁵ / ₃₂ 37	¹³ / ₃₂ 28	¹¹¹ / ₁₆ 43	²³ / ₄ 70	1.5000 38.1	0.6260 15.9	0.8740 22.2	SUC 206-18 206 206-19 206-20	ST 206	2.9
SUCST 207-20 207-21 207-22 207 207-23	¹¹ / ₄ ¹⁵ / ₁₆ ¹³ / ₈ ¹³ / ₈ ¹⁷ / ₁₆	35	⁵ / ₈ 16	¹ / ₂ 13	²⁷ / ₃₂ 64	¹¹⁵ / ₃₂ 37	⁵⁵ / ₆₄ 22	²¹ / ₄ 64	¹⁷ / ₃₂ 13.5	³¹ / ₂ 88.9	⁴¹ / ₃₂ 102	⁵³ / ₃₂ 129	¹¹⁵ / ₃₂ 37	¹³ / ₁₆ 30	2 51	³¹ / ₁₆ 78	1.6890 42.9	0.6890 17.5	1.0000 25.4	SUC 207-20 207-21 207-22 207 207-23	ST 207	3.7