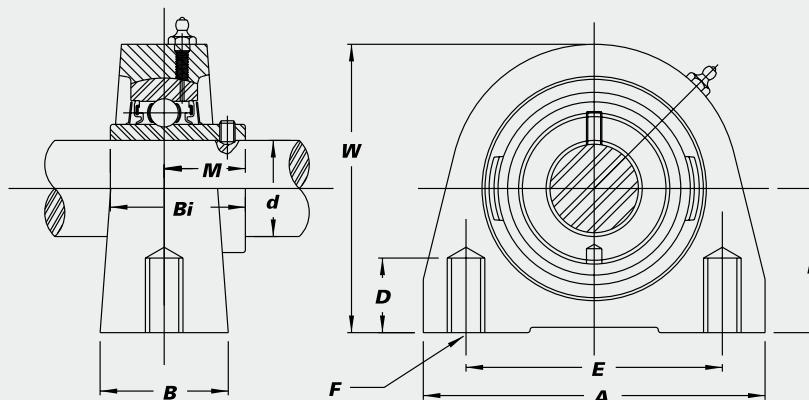
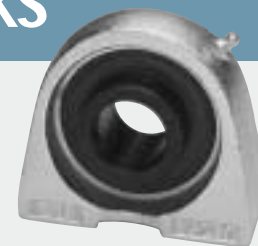


# Nickel Plated Tapped Base Pillow Blocks



## With Black Oxide Bearing Inserts-BUCNPPA

- B-type Seals
- Overview of corrosion resistant products – pg. 52



CORROSION RESISTANT

Unit No.	Shaft Dia.		Dimensions (in.) (mm)								Bearing No.	Housing No.	Weight (lbs.)	
	<i>d</i>		<i>H</i>	<i>A</i>	<i>E</i>	<i>B</i>	<i>W</i>	<i>F</i> -Tapped Holes	<i>D</i> -Min Tap Depth	<i>M</i>				<i>Bi</i>
BUCNPPA 201-8	1/2											BUC 201-8		
202-10	5/8	1 1/16	2 7/8	2	1 1/2	2 3/16	3/8"-16	1/2	0.7205	1.2205	BUC 202-10	NPPA 204	1.4	
204-12	3/4	33.3	73	50.8	38	65	UNC	13	18.3	31.0	BUC 204-12			
204	20										204			
BUCNPPA 205-14	7/8										BUC 205-14			
205	25	1 1/16	3	2	1 1/2	2 13/16	3/8"-16	1/2	0.7756	1.3386	BUC 205-14	NPPA 205	1.6	
205-16	1	36.5	76	50.8	38	71	UNC	13	19.7	34.0	BUC 205-16			
BUCNPPA 206-18	1 1/8										BUC 206-18			
206	30	1 11/16	4	3	1 1/2	3 3/8	7/16"-14	5/8	0.8740	1.5000	BUC 206-18	NPPA 206	2.6	
206-19	1 3/16	42.9	102	76.2	38	86	UNC	16	22.2	38.1	BUC 206-19			
206-20	1 1/4										BUC 206-20			
BUCNPPA 207-20	1 1/4										BUC 207-20			
207-22	1 3/8	1 7/8	4 1/4	3 1/4	1 7/8	3 3/4	1/2"-13	3/4	1.0000	1.6890	BUC 207-20	NPPA 207	3.6	
207	35	47.6	108	82.6	48	95	UNC	19	25.4	42.9	BUC 207-22			
207-23	1 7/16										BUC 207-23			
BUCNPPA 208-24	1 1/2										BUC 208-24			
208	40	1 15/16	4 5/8	3 1/2	1 7/8	3 15/16	1/2"-13	3/4	1.1890	1.9370	BUC 208-24	NPPA 208	4.0	
		49.2	117	88.9	48	100	UNC	19	30.2	49.2	208			
BUCNPPA 209-26	1 5/8										BUC 209-26			
209-27	1 11/16	2 1/8	5	3 3/4	2	4 1/4	1/2"-13	3/4	1.1890	1.9370	BUC 209-26	NPPA 209	5.0	
209-28	1 3/4	54.0	127	95.3	51	108	UNC	19	30.2	49.2	BUC 209-27			
209	45										BUC 209-28			
											209			
BUCNPPA 210-30	1 7/8										BUC 210-30			
210-31	1 15/16	2 1/4	5 1/2	4	2	4 5/8	5/8"-11	7/8	1.2835	2.0315	BUC 210-30	NPPA 210	5.9	
210	50	57.2	140	101.6	51	117	UNC	22	32.6	51.6	BUC 210-31			
210-32	2S										BUC 210-32			