

Nickel Plated Pillow Blocks

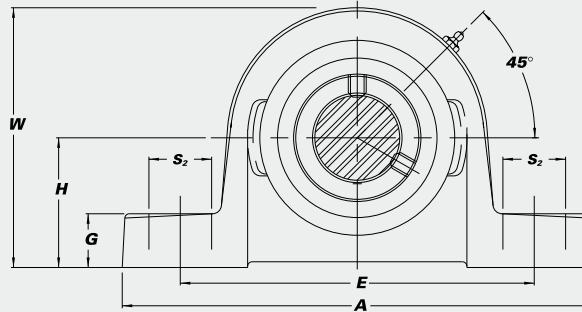
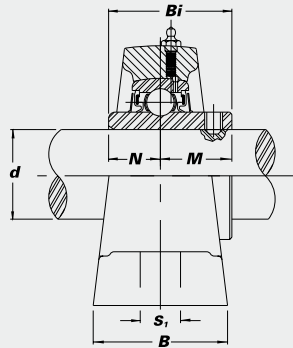
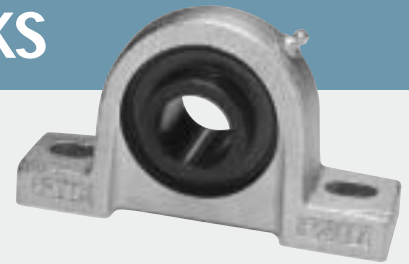


B-type Seal

With Black Oxide Bearing Inserts-BUCNPP

- High Shaft Height
- B-type Seals

• Overview of corrosion resistant products – pg. 52



CORROSION RESISTANT

Unit No.	Shaft Dia.		Dimensions (in.) (mm)										Bolt Used (in.)	Bearing No.	Housing No.	Weight (lbs.)			
	d (in.)	d (mm)	H	A	E	B	S ₂	S ₁	G	W	Bi	N					M		
BUCNPP 201-8	1/2	12.7	1 3/16	47/8	3 5/8	1 7/16	3/4	7/16	17/32	2 23/64	1.0236	0.3937	0.6299	3/8	BUC 201-8	NPP 203	1.5		
BUCNPP 202-10	5/8	15.875	30.2	124	92	37	19	11	13	60	26.0	10.0	16.0	3/8	BUC 202-10	NPP 203	1.5		
BUCNPP 204-12	3/4	19.0	20	33.3	5	3 3/4	1 1/2	1 1/16	7/16	9/16	2 19/32	1.2205	0.5000	0.7205	3/8	BUC 204-12	NPP 204	1.6	
BUCNPP 204					127	95	38	17	11	14	66	31.0	12.7	18.3					
BUCNPP 205-14	7/8	22.225	25	36.5	5 1/2	4 1/8	1 1/2	1 1/16	1/2	5/8	2 27/32	1.3386	0.5630	0.7756	3/8	BUC 205-14	NPP 205	2.0	
BUCNPP 205					140	105	38	17	13	16	72	34.0	14.3	19.7					
BUCNPP 205-16	1	25.4																	
BUCNPP 206-18	1 1/8	31.75	30	42.9	6 5/16*	4 3/4	1 3/4	1 3/16	9/16	1 1/16	3 19/64	1.5000	0.6260	0.8740	1/2	BUC 206-18	NPP 206	3.0	
BUCNPP 206					160	121	44	21	14	18	84	38.1	15.9	22.2					
BUCNPP 206-19	1 3/16	38.1																	
BUCNPP 206-20	1 1/4 S	31.75																	
BUCNPP 207-20	1 1/4	31.75	35	47.6	6 17/32	5	1 29/32	7/8	9/16	3/4	3 11/16	1.6890	0.6890	1.0000	1/2	BUC 207-20	NPP 207	4.0	
BUCNPP 207-22	1 3/8	34.925																	
BUCNPP 207					127	48	22	14	19	94	42.9	17.5	25.4						
BUCNPP 207-23	1 7/16	40.0																	
BUCNPP 208-24	1 1/2	38.1	40	49.2	1 15/16**	7 1/8	5 7/16	2	7/8	9/16	1 3/16	4	1.9370	0.7480	1.1890	1/2	BUC 208-24	NPP 208	5.0
BUCNPP 208					137	51	22	14	21	102	49.2	19.0	30.2						
BUCNPP 209-26	1 5/8	41.275	45	54.0	7 1/2	5 3/4	2 1/8	1 3/16	19/32	7/8	4 17/64	1.9370	0.7480	1.1890	1/2	BUC 209-26	NPP 209	5.7	
BUCNPP 209-27	1 11/16	44.475																	
BUCNPP 209-28	1 3/4	44.475																	
BUCNPP 209					146	54	21	15	22	109	49.2	19.0	30.2						
BUCNPP 210-30	1 7/8	47.625	50	57.2	8	6 1/4	2 1/4	1 5/16	23/32	1 5/16	4 33/64	2.0315	0.7480	1.2835	5/8	BUC 210-30	NPP 210	6.8	
BUCNPP 210-31	1 15/16	48.275																	
BUCNPP 210					203	159	57	24	18	24	115	51.6	19.0	32.6					
BUCNPP 210-32	2 S	50.8																	
BUCNPP 211-32	2	50.8	55	63.5	8 5/8	6 7/8	2 5/8	1 5/16	23/32	1 1/16	5 1/32	2.1890	0.8740	1.3150	5/8	BUC 211-32	NPP 211	8.8	
BUCNPP 211					220	174	60	24	18	27	128	55.6	22.2	33.4					
BUCNPP 211-35	2 3/16	54.0																	
BUCNPP 212-36	2 1/4	60.325	60	69.8	9 17/32	7 11/32	2 1/2	1	25/32	1 1/16	5 33/64	2.5630	1.0000	1.5630	5/8	BUC 212-36	NPP 212	11.2	
BUCNPP 212					242	187	64	25.4	20	27	140	65.1	25.4	39.7					
BUCNPP 212-39	2 1/16	52.075																	
BUCNPP 213-40	2 1/2	63.5																	
BUCNPP 213-40					3	10 7/16	8	2 3/4	1 3/16	1	1 7/64	6 1/32	2.5630	1.0000	1.5630	7/8	BUC 213-40	NPP 213	14.1
BUCNPP 213-40					76.2	265	203	70	30	25.4	28	153	65.1	25.4	39.7				
BUCNPP 215-47	2 15/16	64.9375																	
BUCNPP 215-48	3	76.2																	
BUCNPP 215-47					3 1/4	10 13/16	8 1/2	2 15/16	1 1/4	1	1 1/8	6 33/64	3.0630	1.3110	1.7520	7/8	BUC 215-47	NPP 215	17.0
BUCNPP 215-48					82.6	275	217	75	31	25.4	29	166	77.8	33.3	44.5				

*1 Also available 1 5/8"

*2 Also available 2 1/8"